

SAV 240.08

HOLDING MAGNETS

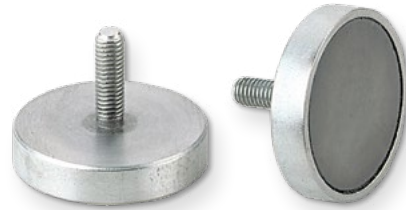
With threaded stud

DESIGN

Flat pot magnet with threaded stud, galvanised surface, shielded system.
Max. service temperature: 200 °C.

FASTENING OPTION

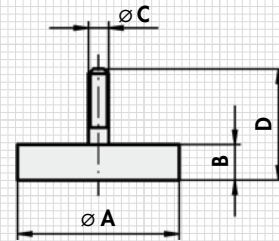
Screwing in



MAGNET MATERIAL

Hard ferrite (oxide 380)

Type	mm				Rated holding force N	Weight kg
	A ±0.2	B ±0.2	C	D		
MH 8 - 10	10	4.5	M 3	11.5	4	0.002
MH 8 - 13	13	4.5	M 3	11.5	10	0.003
MH 8 - 16 - 1	16	4.5	M 3	11.5	18	0.005
MH 8 - 16 - 2	16	4.5	M 4	11.5	18	0.005
MH 8 - 20 - 1	20	6	M 3	12	30	0.01
MH 8 - 20 - 2	20	6	M 6	36	30	0.015
MH 8 - 25 - 1	25	7	M 4	15	40	0.019
MH 8 - 25 - 2	25	7	M 5	22	40	0.02
MH 8 - 25 - 3	25	7	M 6	27	40	0.022
MH 8 - 32 - 1	32	7	M 4	15	80	0.03
MH 8 - 32 - 3	32	7	M 6	19	80	0.031
MH 8 - 32 - 4	32	7	M 8	17	80	0.032
MH 8 - 47	47	9	M 6	17	180	0.085
MH 8 - 57 - 2	57	10.5	M 6	18.5	280	0.146
MH 8 - 63	63	14	M 6	29	350	0.233



NOTE

Flat pot magnet with threaded stud, amplified version, see SAV 240.33 - MH 33

ORDERING EXAMPLE

Designation SAV no. - type
Holding magnet SAV 240.08 - MH 8 - 32 - 1

SAV 240.23

HOLDING MAGNETS

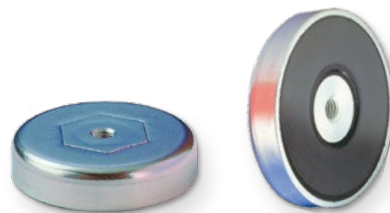
With internal thread

DESIGN

Shielded system, galvanised surface.
Max. service temperature: 200 °C.

FASTENING OPTION

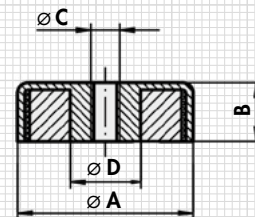
Screws



MAGNET MATERIAL

Hard ferrite (oxide 380)

Type	mm				Weight kg	Rated holding force N
	A ±0.2	B ±0.2	C	D		
MH 23 - 25 - 07	25	7	M 4	5.2	0.018	36
MH 23 - 32 - 07	32	7	M 4	5.2	0.029	75
MH 23 - 40 - 08	40	8	M 4	5.2	0.053	90
MH 23 - 50 - 06	50	10	M 6	12	0.094	170
MH 23 - 50 - 08	50	10	M 8	12	0.094	170
MH 23 - 63 - 14	63	14	M 8	13	0.206	290
MH 23 - 80 - 08	80	18	M 8	14.5	0.472	550
MH 23 - 80 - 10	80	18	M 10	14.5	0.466	550



ORDERING EXAMPLE

Designation SAV no. - type
Holding magnet SAV 240.23 - MH 23 - 40 - 08