

**SAV 240.10**

**HOLDING MAGNETS**

High-energy magnets (flat pot magnets)

**DESIGN**

SmCo5 magnets have a 3 to 5 times higher holding force compared to conventional flat pot magnets. The magnets have a steel casing (shielded).

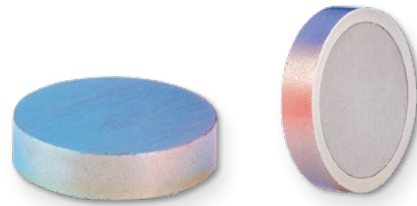
Max. service temperature: 200 °C.

**MAGNET MATERIAL**

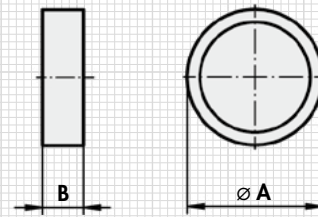
SmCo<sub>5</sub>

**FASTENING OPTION**

Pressing, glueing, casting



Type	mm		Rated holding force N	Weight kg
	A ±0.15	B ±0.15		
MH 10 - 01	6	4.5	5	0.001
MH 10 - 02	8	4.5	11	0.002
MH 10 - 03	10	4.5	20	0.003
MH 10 - 04	13	4.5	40	0.005
MH 10 - 05	16	4.5	60	0.007
MH 10 - 06	20	6	90	0.015
MH 10 - 07	25	7	150	0.027
MH 10 - 08	32	7	220	0.044



**ORDERING EXAMPLE**

Designation SAV no. - type  
Holding magnet SAV 240.10 - MH 10 - 08

**SAV 240.34**

**HOLDING MAGNETS**

High-energy magnets, SmCo flat pot magnets, anisotropic, with cylindrical hole

**DESIGN**

Shielded system, galvanised surface.  
Anisotropic magnetising.

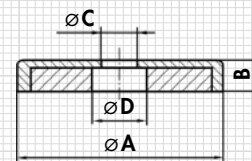
Max. service temperature: 350 °C.

**MAGNET MATERIAL**

SmCo<sub>5</sub>



Type	mm				Rated holding force N	Weight kg
	A ±0.15	B ±0.15	C	D		
MH 34 - 120	20	6	4.5	8	60	0.013
MH 34 - 125	25	7	4.5	8	80	0.024
MH 34 - 132	32	7	5.5	11	200	0.039
MH 34 - 140	40	8	5.5	10	420	0.075



**ORDERING EXAMPLE**

Designation SAV no. - type  
Holding magnet SAV 240.34 - MH 34 - 120