

SAV 240.38

HOLDING MAGNETS

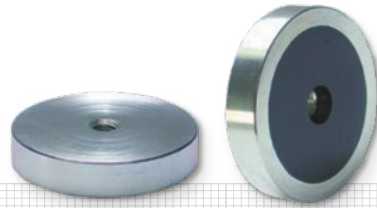
High-energy magnets, hole and counterbore

DESIGN

Shielded system, galvanised surface.
Anisotropic magnetising.
Max. service temperature: 80 °C.

MAGNET MATERIAL

NdFeB

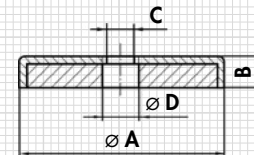
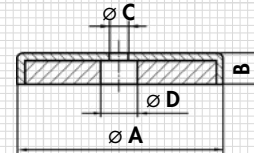


With hole and counterbore:

| Type | mm | | | | Rated holding force N | Weight kg |
|-------------|--------|--------|-----|------|--------------------------|--------------|
| | A ±0.2 | B ±0.2 | C | D | | |
| MH 38 - 216 | 16 | 4.5 | 3.5 | 6.6 | 75 | 0.006 |
| MH 38 - 220 | 20 | 6 | 4.5 | 9 | 105 | 0.013 |
| MH 38 - 225 | 25 | 7 | 4.5 | 9 | 160 | 0.024 |
| MH 38 - 232 | 32 | 7 | 5.5 | 11 | 310 | 0.039 |
| MH 38 - 240 | 40 | 8 | 5.5 | 10.6 | 500 | 0.073 |

With internal thread:

| Type | mm | | | | Rated holding force N | Weight kg |
|-------------|--------|--------|------|------|--------------------------|--------------|
| | A ±0.2 | B ±0.2 | C | D | | |
| MH 38 - 332 | 32 | 7 | M 5 | 5.5 | 330 | 0.04 |
| MH 38 - 340 | 40 | 8 | M 5 | 10.5 | 500 | 0.074 |
| MH 38 - 350 | 50 | 10 | M 8 | 9.5 | 800 | 0.140 |
| MH 38 - 363 | 63 | 14 | M 10 | 11.7 | 1100 | 0.315 |
| MH 38 - 375 | 75 | 15 | M 10 | 13 | 1750 | 0.479 |



ORDERING EXAMPLE

Designation SAV no. - type
Holding magnet SAV 240.38 - MH 38 - 332

SAV 240.41

HOLDING MAGNETS WITH RUBBER COATING

With threaded bush

DESIGN

Rubber-coated holding magnets, disc-shaped.
Rectangular version with 1 or 2 threaded bushes. The Santoprene® rubber coating has a very long useful life and is sufficiently resistant to all weather conditions and UV radiation.
Max. service temperature: 60 °C.

for scratch-free attaching of signs or sample parts to mirror-polished, chrome-plated or painted steel surfaces.

MAGNET MATERIAL

NdFeB

FASTENING OPTION

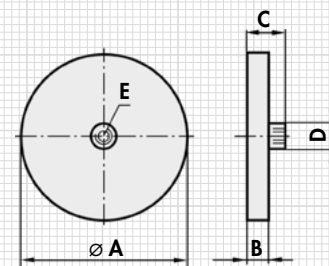
Screws



APPLICATION

The rubber-coated holding magnets are ideal for attaching items such as advertising displays, safety lamps on car roofs, but also

| Type | mm | | | | | Rated holding force N | Weight kg |
|-------|----|-----|------|----|-----|--------------------------|--------------|
| | A | B | C | D | E | | |
| MG 12 | 12 | 7 | 14.8 | 8 | M 4 | 10 | 0.006 |
| MG 22 | 22 | 6 | 11.5 | 8 | M 4 | 50 | 0.013 |
| MG 31 | 31 | 6 | 11.5 | 8 | M 4 | 75 | 0.022 |
| MG 43 | 43 | 6 | 10.5 | 8 | M 4 | 85 | 0.030 |
| MG 66 | 66 | 8.5 | 15 | 10 | M 5 | 180 | 0.105 |
| MG 88 | 88 | 8.5 | 17 | 12 | M 8 | 420 | 0.192 |



ORDERING EXAMPLE

Designation SAV no. - type
Holding magnet SAV 240.41 - MG 12