

SAV 240.80

OFFICE MAGNETS

With plastic housing

DESIGN

Strong layered magnet with plastic housing, max. service temperature: 50 °C.

MAGNET MATERIAL

Hard ferrite, anisotropic

Available in 4 versions:

Type MO 10 - 01 with eyebolt, white.

Type MO 10 - 02 with hook, white.

Type MO 10 - 03 with threaded stud M6, black.

Type MO 10 - 04 with internal thread M6, black.



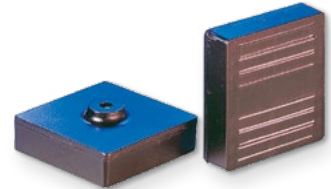
Type MO 10 - 01



Type MO 10 - 02



Type MO 10 - 03



Type MO 10 - 04

Type	mm			Total height approx.	Rated holding force N	Weight kg
	Length	Width	Height			
MO 10 - 01	58	58	15	41.5	300	0.130
MO 10 - 02	53	27.5	12.5	28	150	0.053
MO 10 - 03	58	58	19.5	42	300	0.125
MO 10 - 04	58	58	15	19.5	300	0.119

ORDERING EXAMPLE

Designation SAV no. - type
Office magnet SAV 240.80 - MO 10 - 01

SAV 240.83

OFFICE MAGNETS

With steel housing

DESIGN

Flat pot magnet with eye bolt or hook (MO 20 - 80). Steel housing, painted white. Custom colours available from 1000 units without surcharge.

APPLICATION

As a decorative magnet

MAGNET MATERIAL

Hard ferrite, anisotropic



Type	mm		Hook	Rated holding force N	Weight kg
	Diameter	Hook			
MO 20 - 16	16	M 3	18	0.007	
MO 20 - 20	20	M 3	30	0.012	
MO 20 - 25	25	M 4	40	0.023	
MO 20 - 32	32	M 4	80	0.034	
MO 20 - 36	36	M 4	100	0.045	
MO 20 - 40	40	M 4	125	0.059	
MO 20 - 47	47	M 4	180	0.089	
MO 20 - 50	50	M 4	220	0.107	
MO 20 - 57	57	M 4	280	0.149	
MO 20 - 63	63	M 4	350	0.233	
MO 20 - 80	80	Eyebolt M6	600	0.485	

ORDERING EXAMPLE

Designation SAV no. - type
Office magnet SAV 240.83 - MO 20 - 47