

SAV 242.07

PERMANENT MAGNETIC CLAMPING BLOCKS

Switchable



APPLICATION

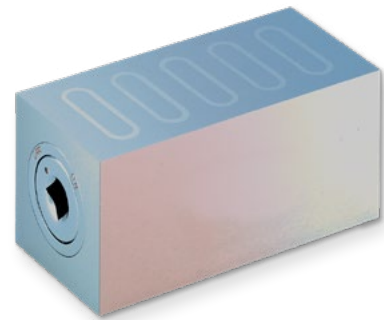
In conjunction with magnetic chucks for grinding workpieces with protruding sections, narrow sides, gauges, etc.

DESIGN

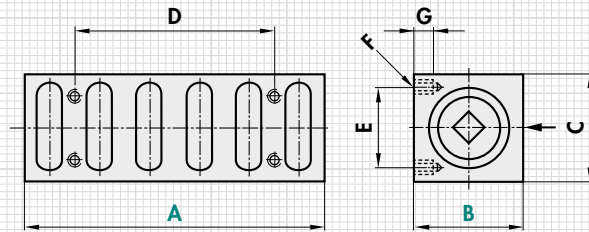
Switchable permanent magnet with chucking area at the top. Side surfaces ground at an angle to one another.

TECHNICAL DATA

- Rated holding force:
 - A = 115: 2.5 N/cm²
 - A = 135: 6.0 N/cm²



mm							kg
A	B	C	D	E	F	G	Weight
115	40	40	75	30	M 5	7	1.3
135	50	60	80	40	M 6	10	2.9



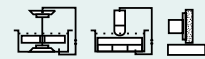
ORDERING EXAMPLE

Designation SAV no. - A x B
 Permanent magnetic clamping block SAV 242.07 - 135 x 50

SAV 242.11

PERMANENT MAGNETIC CLAMPING BLOCKS

With four magnetic chucking areas, also as a stainless version



APPLICATION

For angled and parallel grinding of small and medium workpieces.

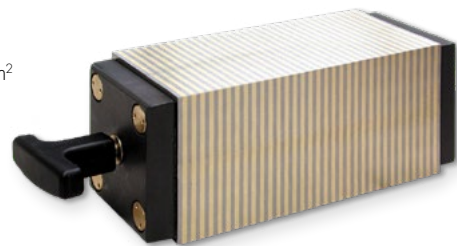
DESIGN

Sturdy design with good magnetic force. Pole divisions made of 2 mm brass/ 2 mm steel.

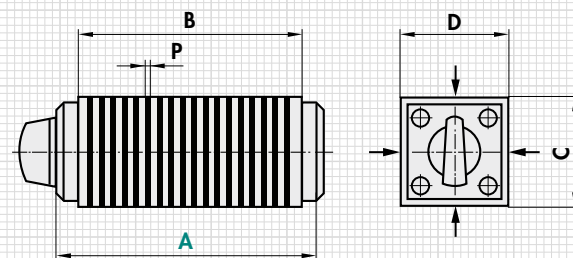
TECHNICAL DATA

- Standard rated holding force: 50 N/cm²
- Rated holding force, stainless (RF): 30 N/cm²
- Magnetic field height: 2 mm
- Wear layer of the pole plate: 4 mm

SAV 242.11 - RF consisting of stainless, high-alloy chrome steel poles. Primarily suitable for use on EDM machines.



mm					kg
A	B	C	D	P	Weight
140	115	65	65	2 + 2	3.1
160	135	65	65	2 + 2	4.0



4 magnetic chucking areas

ORDERING EXAMPLE

Designation SAV no. - A - version
 Permanent magnetic clamping block SAV 242.11 - 140 - RF