

**SAV 243.15**

**PERMANENT MAGNETIC BEAMS**

With transverse pole pitch top and bottom



**APPLICATION**

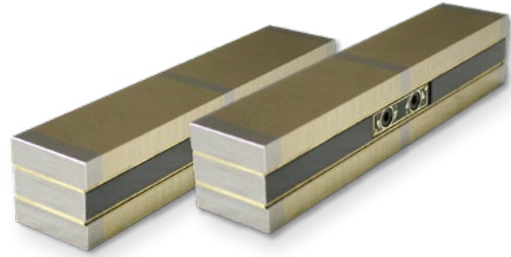
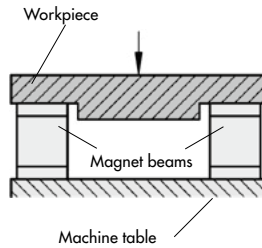
As a workholding fixture for holding workpieces on EDM machines and machine tools, for jigs, etc.

**DESIGN**

Two opposite chucking areas, separate switching. Only available in pairs. Low magnetic field due to fine pole pitch.

**TECHNICAL DATA**

- Parallelism: 0.02 mm
- Pole pitch: 1.3 mm
- Magnetic field height: 6 mm
- Wear layer of the pole plate: 6 mm



| mm  |     |      |      |    |    |    |    | N           | kg     |
|-----|-----|------|------|----|----|----|----|-------------|--------|
| A   | B   | C    | D    | E  | F  | G  | H  | Rated force | Weight |
| 125 | 98  | 13.5 | 13.5 | 52 | 50 | 15 | -  | 300         | 2.5    |
| 180 | 153 | 13.5 | 13.5 | 52 | 50 | 15 | 11 | 400         | 3.6    |
| 250 | 225 | 12.5 | 12.5 | 52 | 50 | 15 | 11 | 590         | 5.0    |

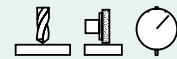
**ORDERING EXAMPLE**

|                         |                  |
|-------------------------|------------------|
| Designation             | SAV no. - A      |
| Permanent magnetic beam | SAV 243.15 - 125 |

**SAV 242.21**

**PERMANENT MAGNETIC V BLOCKS**

Four magnetic contact surfaces



**APPLICATION**

Positioning

**DESIGN**

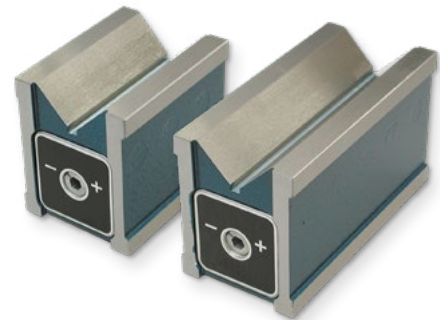
4 magnetic contact surfaces (top and bottom and 2 face sides) which are switched on and off together.

2 opposite control points including removable key. Wooden storage box SAV 539.02 - HK2 available (surcharge applies).

Available individually (S) and in pairs (P). The prism pair is ground to the same height.

**TECHNICAL DATA**

- Plane parallelism: < 0.01 mm
- Prism angle: 90°



| mm     |       |        |                    |                      | daN                 | kg     |
|--------|-------|--------|--------------------|----------------------|---------------------|--------|
| Length | Width | Height | Workpiece diameter | Width of large prism | Rated holding force | Weight |
| 80     | 60    | 73     | 6 - 50             | 38                   | 30                  | 2.0    |
| 125    | 60    | 73     | 6 - 50             | 38                   | 45                  | 3.3    |

**ORDERING EXAMPLE**

|                            |                  |
|----------------------------|------------------|
| Designation                | SAV no. - length |
| Permanent magnetic V block | SAV 242.21 - 125 |

PERM  
1.2.1  
E  
1.2.2  
EP  
1.2.3  
1.2.4  
1.2.5  
E  
1.2.6  
1.2.7  
1.2.8  
1.2.9  
S N S  
1.2.10