

SAV 242.29

PERMANENT MAGNETIC V BLOCKS

Sealed version



DESIGN

3 magnetic contact surfaces (top surface with prism and 2 faces).
Including removable key. Strong, switchable permanent magnet.
2 prisms ground together at the same height
Fully sealed.
Wooden storage box available (surcharge applies). Supplied in pairs.

TECHNICAL DATA

- Prism angle: 90°



mm				daN		kg		
Length	Width	Height	Width of prism	Workpiece diameter	Rated holding force	Weight	Wooden box order no.	
70	40	50	36	50	15	1.0	SAV 539.01-HK1	
100	50	80	60	80	20	2.3	SAV 539.02-HK2	
150	50	100	90	125	23	4.5	SAV 539.05-HK5	

ORDERING EXAMPLE

Designation	SAV no. - length
Permanent magnetic V block	SAV 242.29 - 100

SAV 242.31

PERMANENT MAGNETIC CLAMPING BLOCKS

With strong prism

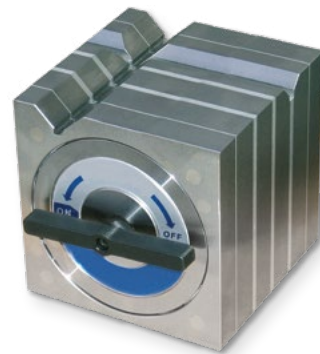


DESIGN

4 magnetic contact surfaces (top surface, bottom surface prism and 2 sides).
Including removable key. Strong, switchable permanent magnet.

TECHNICAL DATA

- Perpendicularity: 0.025/100 mm
- Parallelism: 0.015/100 mm
- Prism angle: 90°



mm			Workpiece diameter in mm		Rated holding force in daN		kg	
Length	Width	Height	Main prism	Secondary prism	Main prism	Secondary prism	Weight	
80	80	80	10 - 25	8 - 15	12	10	3.5	
125	125	125	10 - 40	10 - 26	30	12,5	14.0	
180	180	180	14 - 50	14 - 50	40	30	37.0	

ORDERING EXAMPLE

Designation	SAV no. - length
Permanent magnetic clamping block	SAV 242.31 - 180

