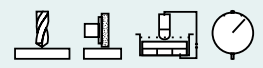


SAV 242.29 **PERMANENT MAGNETIC V BLOCKS**
Sealed version



DESIGN

3 magnetic contact surfaces (top surface with prism and 2 faces).
Including removable key. Strong, switchable permanent magnet.
2 prisms ground together at the same height
Fully sealed.
Wooden storage box available (surcharge applies). Supplied in pairs.

TECHNICAL DATA

- Prism angle: 90°



| mm | | | | | daN | kg | |
|--------|-------|--------|----------------|--------------------|---------------------|--------|----------------------|
| Length | Width | Height | Width of prism | Workpiece diameter | Rated holding force | Weight | Wooden box order no. |
| 70 | 40 | 50 | 36 | 50 | 15 | 1.0 | SAV 539.01-HK1 |
| 100 | 50 | 80 | 60 | 80 | 20 | 2.3 | SAV 539.02-HK2 |
| 150 | 50 | 100 | 90 | 125 | 23 | 4.5 | SAV 539.05-HK5 |

ORDERING EXAMPLE

| | |
|----------------------------|------------------|
| Designation | SAV no. - length |
| Permanent magnetic V block | SAV 242.29 - 100 |

SAV 242.31 **PERMANENT MAGNETIC CLAMPING BLOCKS**
With strong prism

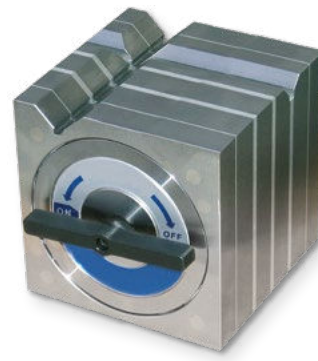


DESIGN

4 magnetic contact surfaces (top surface, bottom surface prism and 2 sides).
Including removable key. Strong, switchable permanent magnet.

TECHNICAL DATA

- Perpendicularity: 0.025/100 mm
- Parallelism: 0.015/100 mm
- Prism angle: 90°



| mm | | | Workpiece diameter in mm | | Rated holding force in daN | | kg |
|--------|-------|--------|--------------------------|-----------------|----------------------------|-----------------|--------|
| Length | Width | Height | Main prism | Secondary prism | Main prism | Secondary prism | Weight |
| 80 | 80 | 80 | 10 - 25 | 8 - 15 | 12 | 10 | 3.5 |
| 125 | 125 | 125 | 10 - 40 | 10 - 26 | 30 | 12,5 | 14.0 |
| 180 | 180 | 180 | 14 - 50 | 14 - 50 | 40 | 30 | 37.0 |

ORDERING EXAMPLE

| | |
|-----------------------------------|------------------|
| Designation | SAV no. - length |
| Permanent magnetic clamping block | SAV 242.31 - 180 |

