

SAV 244.43

ELECTRO MAGNETIC CIRCULAR CHUCKS

With parallel pole pitch $P = 4$ mm



Round magnet with fine pole pitch for thin workpieces.
Centre magnetically active.

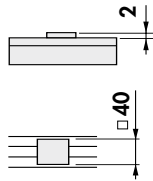
DESIGN

- Pole plate with particularly narrow, continuous pole pitch, 3 mm steel and 1 mm brass
- Low height
- Pole divisions bonded and reinforced with tie rods
- High accuracy thanks to pole plates bolted in a narrow grid
- Low field height of 4 mm
- Switch-off using demagnetising cycle
- Fastening hole pattern with threads at the rear or through holes upon agreement
- 8 mm wear layer on the pole plate
- Robust and water-tight
- Protection rating IP 65
- Suitable for connecting to the SAV 876.10 control unit

APPLICATION

For grinding thin, flat workpieces.

- Grinding thin plates, wide rings with low height and min. contact widths of 40 mm
- For workpieces up to: min. thickness = 2 mm
- For flat workpieces: min. length = 40 mm



RATED HOLDING FORCE

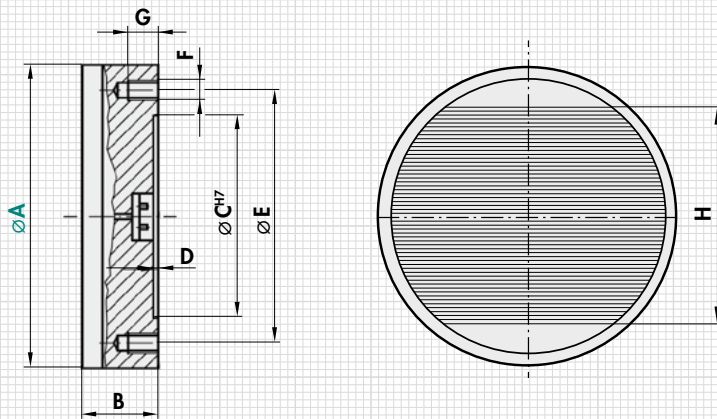
100 N/cm²,
controllable with control unit using holding force coding switch

RATED VOLTAGE, RECOMMENDED

110 V DC

SCOPE OF DELIVERY

- Larger round magnets are provided with threads for transport
- Standard electrical connection centrally on the rear side using terminals
- Control and manual operation not in the scope of delivery



A	B ₋₁ ⁰	C	D	E	F	G	H	W Power	kg Weight	Type Control
300	100	160	4	190	M12 (4x)	16	213	110	55.0	E 4
400	100	210	4	250	M12 (6x)	16	301	180	98.0	E 4
500	100	280	4	320	M12 (6x)	16	401	230	153.0	E 4
600	100	350	4	390	M12 (6x)	18	481	410	220.0	E 4
700	100	400	4	450	M12 (6x)	18	581	430	300.0	E 4
800	100	450	4	500	M16 (6x)	18	681	540	392.0	E 4

RECOMMENDED CONTROL AND CONTROL UNIT

Type	Control	Hand remote unit
E 4	SAV 876.10-S-O-110/6/230	SAV 876.02-SE3

Installation control units as per page 74.

ORDERING EXAMPLE

Designation SAV no. - A - rated voltage
Electro magnetic circular chuck SAV 244.43 - 300 - 110 V