

SAV 244.45

ELECTRO MAGNETIC CIRCULAR CHUCKS FOR CENTELESS SHOE GRINDING

With pot magnet system for large range of workpieces



Special round magnet for thin rings (rolling bearings).

DESIGN

- Extreme magnetic field for grinding a large range of workpieces
- Delivery with drivers upon agreement or adapted to existing drivers
- Spindle adaptation upon agreement
- On request with exchangeable pole plates for large chucking area
- For easy workpiece handling, easy to automate
- Internal cooling water feed possible
- Control and hand remote unit not in the scope of delivery

APPLICATION

- For grinding small rings with small workpiece contact area
- Eccentric workpiece chucking and positioning using stationary slide shoes for extremely low wall thickness fluctuation
- Easy changeover with universal workpiece drivers
- Universally suitable for large range of diameters
- For chucking workpieces up to 500 mm diameter
- Workpiece eccentric to the spindle
- Magnet for rotation, slide shoes (provided by customer) for precision

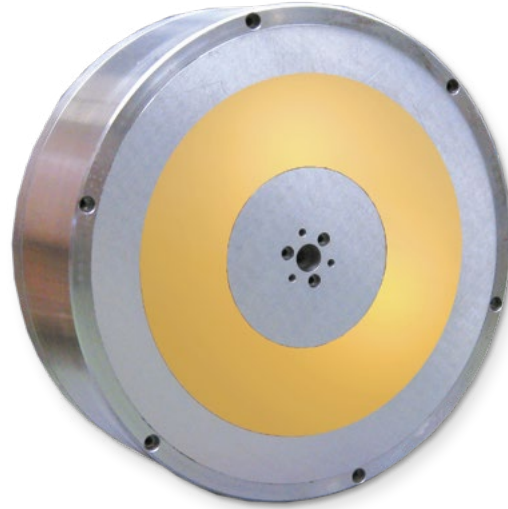
RATED VOLTAGE, RECOMMENDED

24 V DC up to 250 mm diameter

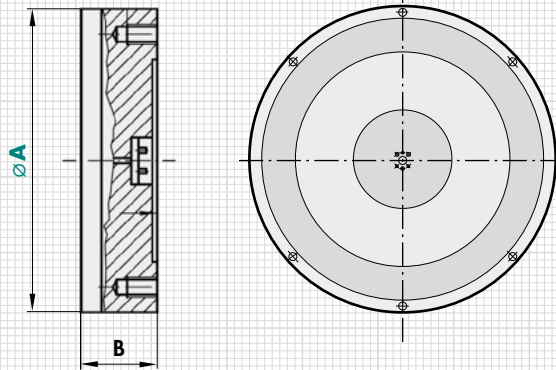
110 V DC over 250 mm diameter

SCOPE OF DELIVERY

- Larger round magnets are provided with threads for transport
- Standard electrical connection centrally on the rear side using terminals
- Control and hand remote unit not in the scope of delivery



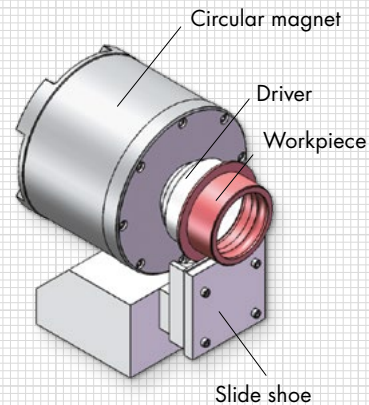
mm		kg	W	Type
A	B ₁	Weight	Power	Control
150	130	23.0	25	E 1
200	130	40.0	40	E 1
250	160	80.0	62	E 1
300	160	113.0	90	E 4
400	180	225.0	140	E 4
450	180	285.0	180	E 4
500	200	390.0	250	E 4



RECOMMENDED CONTROL AND CONTROL UNIT

Type	Control	Hand remote unit
E 1	SAV 876.10-S-T-24/7/230	SAV 876.02-SE3
E 4	SAV 876.10-S-O-110/6/230	SAV 876.02-SE3

Installation control units as per page 74.



ORDERING EXAMPLE

Designation SAV no. - A - rated voltage
 Electro magnetic circular chuck for centeless shoe grinding SAV 244.45 - 500 - 110 V

PERM
 1.2.1
 E
 1.2.2
 EP
 1.2.3
 1.2.4
 1.2.5
 E
 1.2.6
 1.2.7
 1.2.8
 1.2.9
 1.2.10