

SAV 245.05

PRECISION SINE TABLES

Swivelling around transverse axis, low design



DESIGN

With sine table base unit made of steel. Hardened, burnished and precision-ground. Maximum precision with extremely flat design. Standard design with permanent magnetic chuck.

On/off control from above.

Sine tables are delivered in a wooden storage box.

With sine table with degrees/minutes in mm, precision length stop and transverse stop bar.

APPLICATION

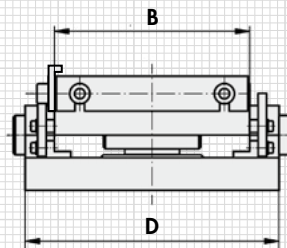
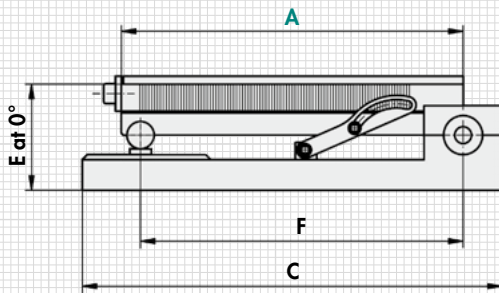
The angles are determined using the gauge blocks using the sinusoidal principle.

Clamping is achieved with the upper bearing shell halves.



TECHNICAL DATA

- Angle accuracy: ± 5 arc sec
- Plane parallelism: $\pm 0.005/100$ mm
- Gauge block at 0° : 3 mm
- Swivelling range: 0° to 30°
- Rated holding force: 80 N/cm^2
- Pole pitch: 1.9 mm
- Wear layer of the pole plate: 6 mm



| mm | | | | | | kg |
|-----|-----|-----|-----|---------|-----|--------|
| A | B | C | D | E_2^0 | F | Weight |
| 175 | 100 | 190 | 140 | 67 | 160 | 8.5 |
| 255 | 130 | 270 | 170 | 66 | 240 | 14.0 |
| 300 | 150 | 315 | 190 | 69 | 285 | 20.5 |
| 350 | 150 | 365 | 190 | 69 | 335 | 27.5 |
| 400 | 200 | 415 | 240 | 68 | 385 | 42.0 |
| 450 | 150 | 465 | 190 | 69 | 435 | 35.0 |

Design with flushing holes available (surcharge applies).

ORDERING EXAMPLE

| | |
|----------------------|------------------|
| Designation | SAV no. - A |
| Precision sine table | SAV 245.05 - 450 |