

**SAV 245.06**

**PRECISION SINE TABLES**

Swivelling around centre axis to both sides



For grinding and measuring precision workpieces in each angle position without rechucking the parts.

**DESIGN**

With sine base unit and all components and guide systems made of tool steel. Hardened, burnished and precision-ground. Standard version with permanent magnetic chuck SAV 243.01.

Maximum precision and inherent stability in each rotation position.

Delivered in a wooden storage box, up to and including size 350 x 150 mm.

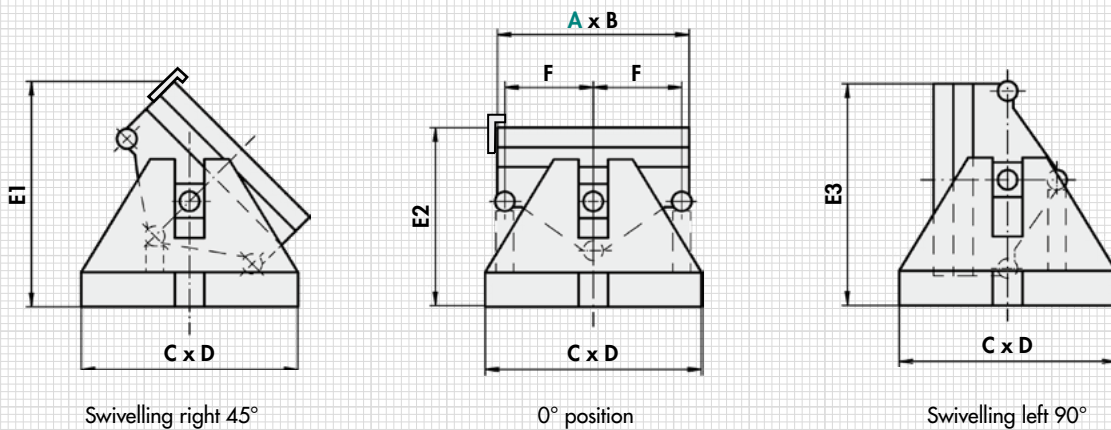
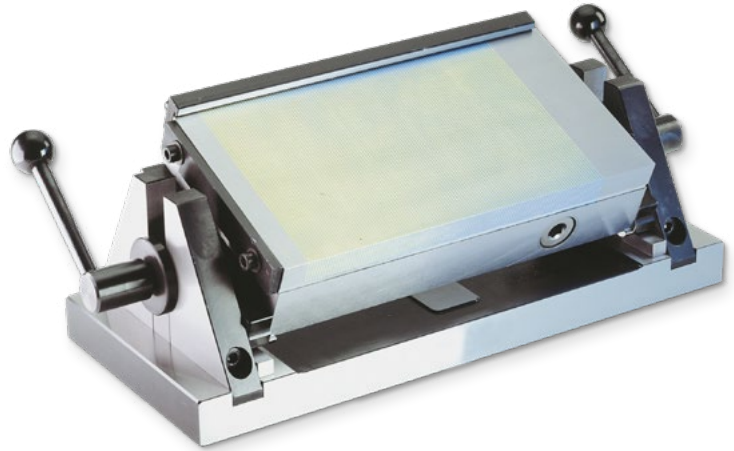
With sine table with degrees/minutes in mm, precision length stop and transverse stop bar.

**APPLICATION**

The angles are determined using the gauge blocks using the sine principle up to 90°.

**TECHNICAL DATA**

- Angle accuracy:  $\pm 5$  arc sec
- Plane parallelism:  $\pm 0.005/100$  mm
- Swivelling range:  $-90^\circ$  to  $+90^\circ$
- Rated holding force:  $90 \text{ N/cm}^2$
- Pole pitch: 1.9 mm
- Magnetic field height: 6 mm
- Wear layer of the pole plate: 8 mm



mm								kg
A	B	C	D	E1	E2	E3	F	Weight
255	130	365	150	160	114	174	60	30.0
350	150	460	160	175	122	188	70	46.0
400	200	510	200	220	137	220	100	64.0
500	200	610	200	220	137	220	100	78.0
600	200	710	200	220	137	220	100	92.0

Other dimensions and versions also available with electro permanent magnet or other magnet systems.

**ORDERING EXAMPLE**

Designation	SAV no. - A
Precision sine table	SAV 245.06 - 600