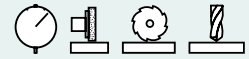


SAV 245.08

PRECISION SINE TABLES with amplified holding force
Swivelling around longitudinal and transverse axis



DESIGN

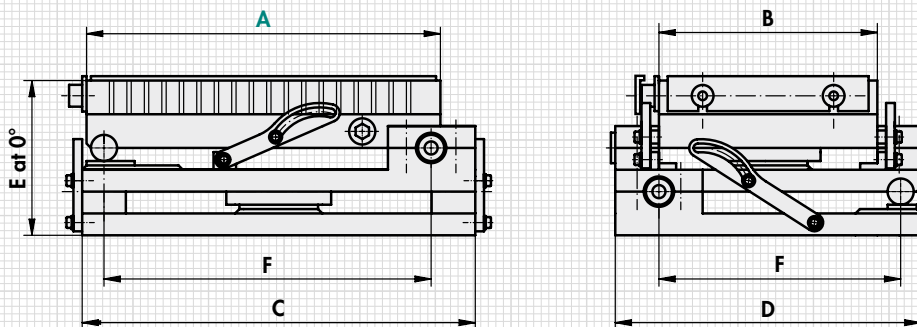
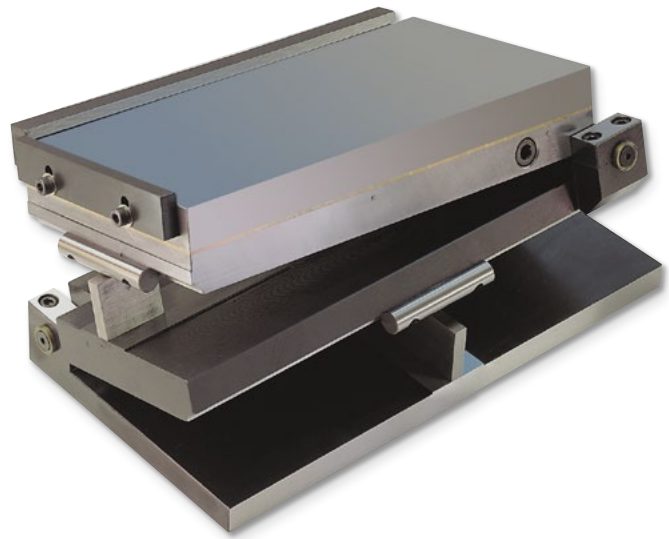
Swivelling around longitudinal and transverse axis. With sine table base unit made of steel. Hardened, burnished and precision-ground. Maximum precision with flat design. Standard version with permanent magnetic chuck SAV 243.11. Delivered in a wooden storage box. With sine table with degrees/minutes in mm, precision length stop and transverse stop bar.

APPLICATION

The angles are determined using the gauge blocks using the sinusoidal principle. Clamping is achieved with a fastening brace at the side and the upper bearing shells.

TECHNICAL DATA

- Angle accuracy: ± 5 arc sec
- Plane parallelism: $\pm 0.005/100$ mm
- Gauge block at 0° : 3 mm
- Swivelling range, long axis: 0° to 45°
- Swivelling range, short axis: 0° to 30°
- Rated holding force: 150 N/cm^2
- Pole pitch: 15 mm
- Magnetic field height: 12 mm
- Wear layer of the pole plate: 5 mm



mm						kg
A	B	C	D	E_{-2}^0	F	Weight
250	150	285	205	154	235/175	20.5
300	150	333	190	122	285/160	27.0
350	150	383	190	122	335/160	36.0
400	200	435	240	126	385/210	52.0

Other designs and dimensions on request. Also available with electro-permanent magnet or other magnet systems. All standard sized of the permanent magnetic chucks SAV 243.11 (chapter 1.2.1) are available as a sine table.

ORDERING EXAMPLE

Designation	SAV no. - A
Precision sine table	SAV 245.08 - 400