

SAV 246.54

PERMANENT MAGNET MULTI-ANGLE SETTERS

Magnetic aid for welding and assembly with 45°, 90° and 135°

APPLICATION

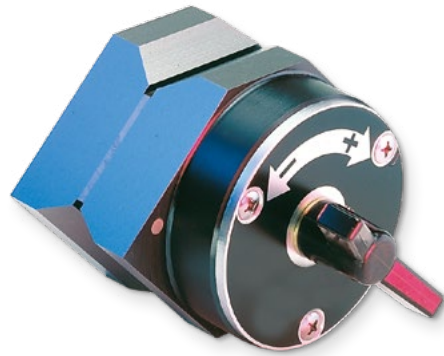
As a welding aid for tubes, round materials, flat iron and profiled iron.

As a chucking tool for drilling fixtures.

To avoid overloading the mitre holders thermally, we recommend using the magnetic aids only for the tack welds and then removing it.

DESIGN

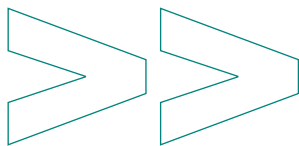
Strong magnetic force, with continuous adjustment for aligning the workpieces.



mm			daN	kg
Length	Width	Height	Rated holding force, surface	Weight
60	60	42	10	0.85
112	112	94	40	6.0

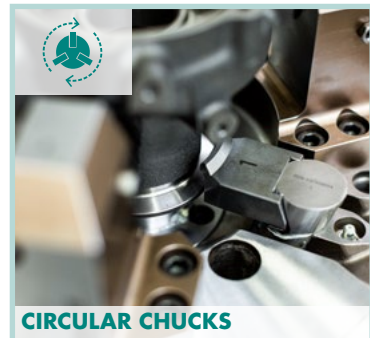
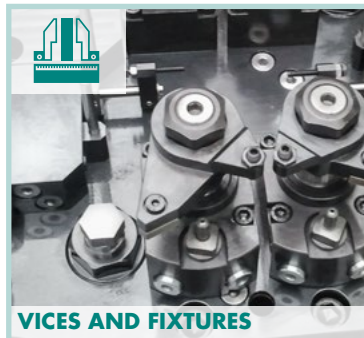
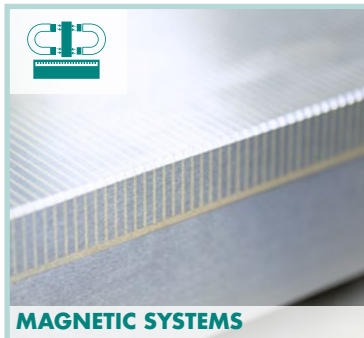
ORDERING EXAMPLE

Designation	SAV no. - length
Permanent magnet multi-angle setter	SAV 246.54 - 108



DID YOU KNOW?

We are not only experts for magnet systems, but also the ideal partner for rotary and stationary workholding, for automation and for individual customised solutions.



To ensure that you will find the right solution with us, we combine our expert knowledge and the different areas of application – for virtually any machining process.

power. people. passion.

PERM

1.2.1

F

1.2.2

EP

1.2.3

1.2.4

1.2.5

E

1.2.6

1.2.7

1.2.8

1.2.9

S N S

1.2.10