

SAV 244.01

PERMANENT MAGNETIC CIRCULAR CHUCKS

With very fine parallel pole pitch $P = 1.9$ mm



APPLICATION

For chucking small and thin to medium workpieces.

DESIGN

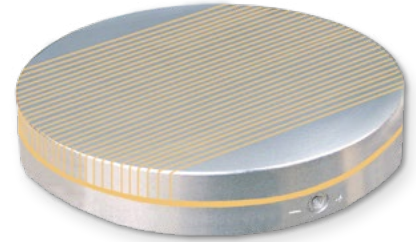
Powerful magnet system with neodymium magnets and low magnetic field height. Magnetic force continuously adjustable.

Available with flange on request (see SAV 248.90 to 248.94).

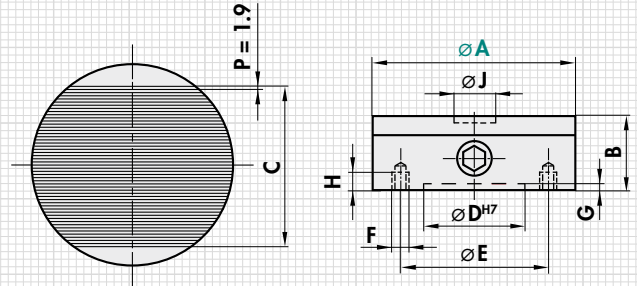
Size J (diameter and depth) machining is possible at the centre of the pole plate. For the other sizes, a 5 mm wearing thickness applies across the entire surface. Concentric lines facilitate visual alignment of the workpieces.

TECHNICAL DATA

- Rated holding force: up to $\varnothing 160$: 60 N/cm²
from $\varnothing 200$: 90 N/cm²
- Magnetic field height: 8 mm
- Wear thickness of the top surface: 5 mm
- Geometrically balanced: Quality G 6.3



mm									kg
A	B ^{+0.5 -2}	C	D	E	F	G	H	J	Weight
100	50	71	60	85	4 x M8	4	10	20x14	3.0
130	50	99	90	115	4 x M8	4	10	20x14	5.0
150	50	105	110	132	4 x M8	4	10	24x5	7.0
160	57	116	125	142	4 x M8	4	16	24x5	9.0
200	57	153	150	180	4 x M8	4	16	200x5	15.0
250	57	192	200	232	4 x M8	4	16	250x5	20.0
300	62	227	250	285	4 x M8	4	16	300x5	31.0



ORDERING EXAMPLE

Designation SAV no. - A
Permanent magnetic circular chuck SAV 244.01 - 150

SAV 248.01

LAMINATED TOP PLATES

For placing on circular magnets with parallel pole pitch



APPLICATION

For chucking profiled workpieces on magnets with parallel pole pitch. Suitable for round magnets SAV 244.01 and SAV 244.11.

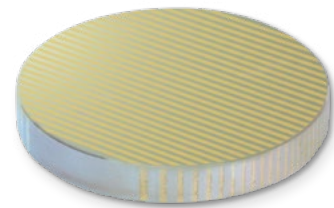
DESIGN

Any type and form of profiles can be machined into the chuck blocks (can also be provided by us). The max. integration depth must be noted. Attaching to a magnet upon agreement. The pole division must run parallel to the base magnet.

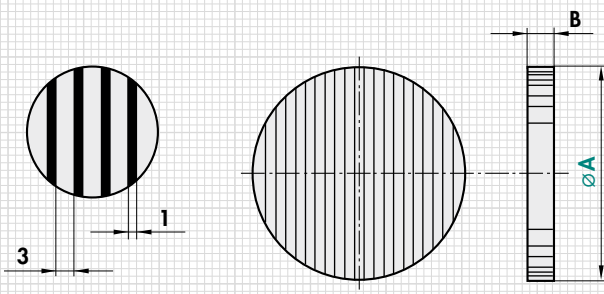
TECHNICAL DATA

- Pole pitch: 3 mm steel, 1 mm brass
- Maximum integration depth: 8 mm

The machining process can cause discolourations. However, these do not constitute a technical defect.



mm		kg	mm		kg	
A	B	Weight	A	B	Weight	
160	25	4.0	300	25	14.0	
200	25	6.0	350	25	19.0	
250	25	10.0	400	30	30.0	



ORDERING EXAMPLE

Designation SAV no. - A
Laminated top plate SAV 248.01 - 400