

**SAV 248.70**

**POLE RAISERS – RECTANGULAR**

For adaptation to the workpiece geometry

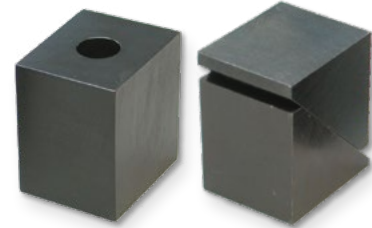


**APPLICATION**

As add-on elements for magnets. Can only be used in conjunction with magnetic chuck SAV 243.77-55 and SAV 243.77-85 or SAV 243.76-65, SAV 243.76-85 and SAV 243.80.

**DESIGN**

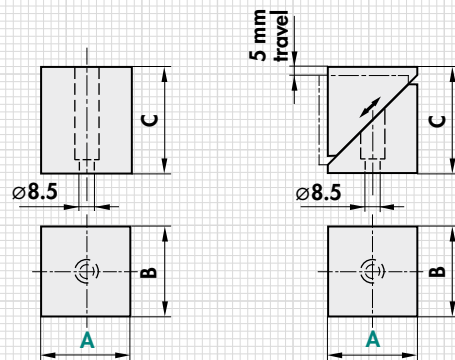
Bright steel, pole raiser can be machined in the desired shape. The table shows an excerpt of the pole shoes manufactured by us as a standard. Can be provided with machining for specific processes and workpieces. Custom versions available.



Type	mm			Design	kg
	A	B	C		
PVS 3	48	40	53.5	Rigid	0.8
PVF 3	48	40	56	spring-loaded	0.8

Type	mm			Design	kg
	A	B	C		
PVS 4	70	70	86.5	Rigid	3.3
PVF 4	70	70	89	spring-loaded	3.5



**ORDERING EXAMPLE**

Designation SAV no. - A - type  
Pole raiser SAV 248.70 - 70 - PVS 3

**SAV 248.70**

**POLE RAISERS – ROUND**

For adaptation to the workpiece geometry

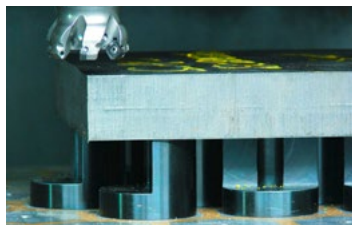


**APPLICATION**

As add-on elements for magnets. Can only be used in conjunction with magnetic chuck SAV 243.78 and SAV 243.79.

**DESIGN**

Bright steel, pole raiser can be machined in the desired shape. The table shows an excerpt of the pole shoes manufactured by us as a standard. Can be provided with machining for specific processes and workpieces. Custom versions available.

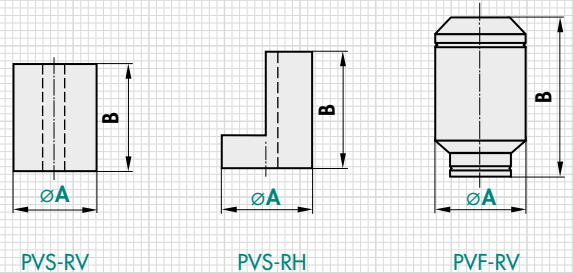


Pole shoe, full

Pole shoe, half

Pole shoe, movable

Type	mm		Design	kg
	A	B		
PVS-RV	55	75	rigid, full	1.8
PVS-RH	55	75	rigid, half	1.4
PVF-RV	60	70 - 80	spring-loaded, full	1.5



**ORDERING EXAMPLE**

Designation SAV no. - A - type  
Pole raiser SAV 248.70 - 60 - PVF-RV