

SAV 248.81

SEPARATE SLIP RING ASSEMBLIES

For power supply to electro magnetic circular chucks

APPLICATION

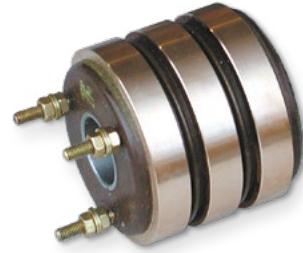
Used to supply power to rotating electro magnetic circular chucks. For separate installation on the hollow machine spindle. The insulation parts must not be wetted with any liquids. A contact protection for the live parts on the machine must be provided. Electrical connection with cable lugs against support nut.

FASTENING

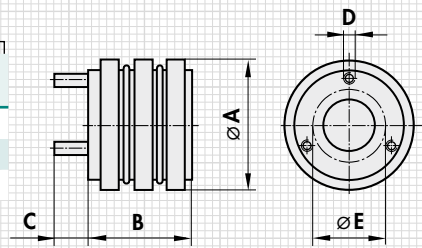
- Shrinking at 130 °C
- Pressing with 0.5 mm interference
- Adhesive bonding

DESIGN

Delivery with only one small hole. The locating hole (or thread) must be subsequently machined according to the machine spindle, taking into account maximum dimension E.



mm	V	Qty.	mm					rpm	kg
max. magnet diameter ϕ	Magnet voltage	Rings	A	B	C	D	E	Max. speed	Weight
up to 300	24	2	80	40	20	M5	28 - 38	3600	1.1
up to 900	110	3	90	61.5	22	M6	30 - 45	3200	2.0
up to 1600	110	3	120	84	22	M8	40 - 65	2500	3.5



ORDERING EXAMPLE

Designation SAV no. - max. round magnet diameter - magnet voltage
 Separate slip ring assembly SAV 248.81 - 1600 - 110 V

SAV 248.83

CARBON BRUSH HOLDERS

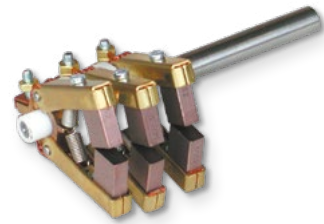
For power supply to round electro magnetic circular chucks

APPLICATION

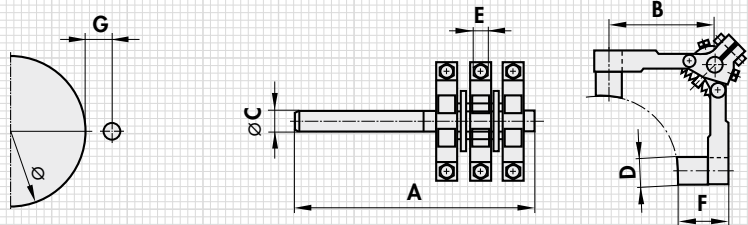
For transferring current to the slip ring assemblies.

DESIGN

Bronze grades, spring-loaded. Attached at distance G from the slip ring assembly.



mm	V	Qty.	mm							kg
max. magnet diameter ϕ	Magnet voltage	Rings	A	B	C	D	E	F	G	Weight
up to 300	24	2	140	40	M8	12.5	6.3	20	27	0.1
up to 900	110	3	140	40	M8	12.5	6.3	20	25	0.17
up to 1600	110	3	140	60	M8	20	8	25	33	0.2



ORDERING EXAMPLE

Designation SAV no. - max. magnet diameter - magnet voltage
 Carbon brush holder SAV 248.83 - 1600 - 110 V