

**SAV 248.92**

**SHORT TAPERED FLANGES**

With cam lock fastening



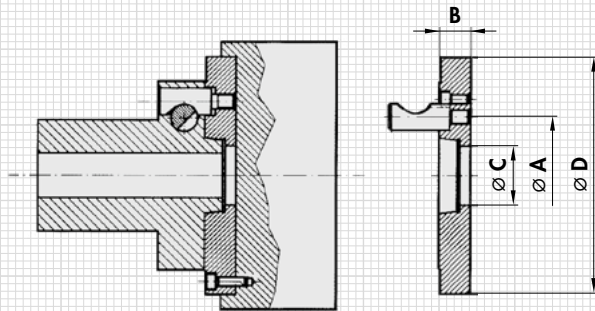
**APPLICATION**

For flanging on round magnets or other workholding fixtures. For spindle heads as per DIN 55029, ISO 702/II, ASA b 5.9 D1.

**DESIGN**

Soft steel flanges as per DIN, ISO and ASA standards. Machined on the spindle side. The magnet-side/chuck-side adaptation is carried out as required (please state diameter and hole pattern when ordering). On customer request, we supply our round magnets already fully flanged.

Spindle head size	mm		Qty.
	A	No. of clamping cams	
4	82.6	3	
5	104.8	6	
6	133.4	6	
8	171.4	6	
11	235.0	6	
15	330.2	6	



**ORDERING EXAMPLE**

Designation SAV no. - spindle head size  
 Short tapered flange with cam lock fastening SAV 248.92 - 15

Dimensions **B**, **C** and **D** as well as the fastening hole circle as per requirements or your specifications.

**SAV 248.94**

**MORSE TAPER FITTINGS**

For adapting to machine and workholding fixture

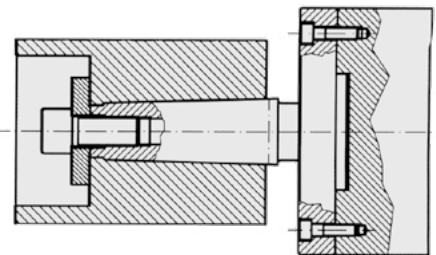


**APPLICATION**

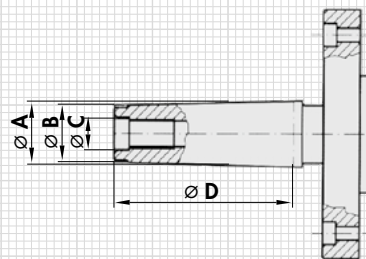
For flanging on round magnets or other workholding fixtures. For fittings as per DIN 228.

**DESIGN**

Soft steel flanges as per DIN. Machined on the spindle side. The magnet-side/chuck-side adaptation is carried out as required (please state diameter and hole pattern when ordering). On customer request, we supply our round magnets already fully flanged. Hardened, polished version made of case-hardened steel available on request.



Morse taper size	mm			
	A	B	C	D
MK 0	9.045	6.4	—	50.0
MK 1	12.065	9.4	M 6	53.5
MK 2	17.78	14.6	M 10	64.0
MK 3	23.825	19.8	M 12	81.0
MK 4	31.267	25.9	M 16	102.5
MK 5	44.399	37.6	M 20	129.5
MK 6	63.348	53.9	M 24	182.0



**ORDERING EXAMPLE**

Designation SAV no. - Morse taper size  
 Morse taper fitting SAV 248.94 - MK 6 and dimensions

Dimensions as per requirements or your specifications.