

**SAV 434.02**

**PRECISION RADIUS DRESSER**

For profiling grinding wheels



**APPLICATION**

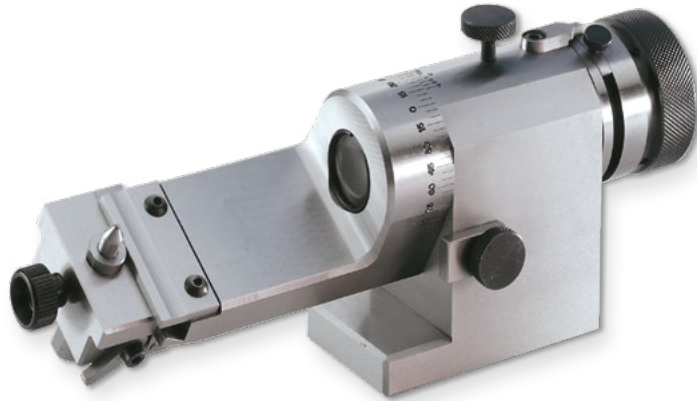
The radius dressing unit can be used to profile grinding wheels with concave and convex radii in combination with tangent bevels.

**DESIGN**

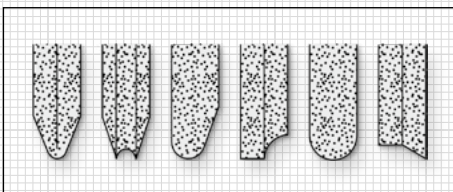
Finished on all sides, with limit stops and a magnifying sight glass in the spindle. The swivel arm features a scale. The radius movement is limited by adjustable stops. The slider with the dressing diamond is attached to the swivel arm with a dovetail structure. The dressing diamond is set with gauge blocks. A fine-adjustment screw on the diamond holder can be used to move the diamond into the correct position.

**ACCESSORIES**

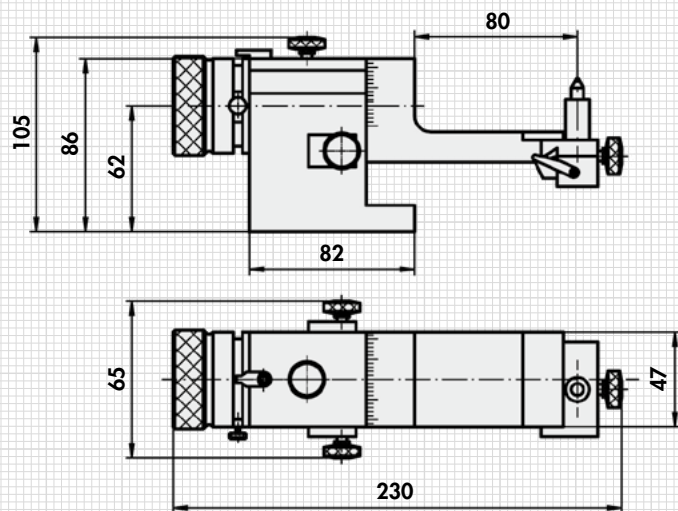
Dressing diamond SAV 401.01 - K 06  
Available subject to a surcharge.



Axis height	in mm	62
Max. concave dressing radius	in mm	26
Max. concave dressing radius	in mm	16
Max. grinding wheel ø	in mm	200
Opening for diamond	in mm	6
Adjustment path	in mm	±15
Weight	in kg	4.1



Examples for profiled grinding wheels



**ORDERING EXAMPLE**

<b>Designation</b>	<b>SAV no.</b>
Precision radius dresser	SAV 434.02

1.3

1.4

2.1

2.2

3.1

3.2

4.1