

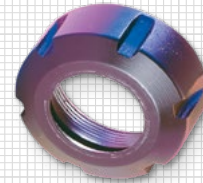
SAV 439.62 - 439.70

**ACCESSORIES FOR CYLINDRICAL GRINDING UNITS/
INDEX TABLES**

Special-purpose accessories

NUT FOR COLLET CHUCK 470 E SAV 439.68

For all units with Schaublin (Sch) spindle taper M40 x 1.5

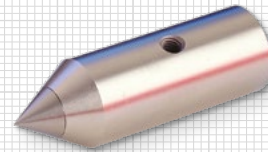


ORDERING EXAMPLE

Designation	SAV no.
Nut for collet chuck	SAV 439.68-1

LATHE CENTRE SAV 439.69

Fixed, tailstock side, for cylindrical grinding machines SAV 434.80/SAV 434.82/SAV 434.84

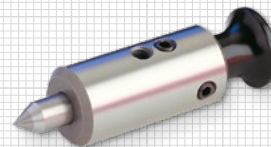


ORDERING EXAMPLE

Designation	SAV no.
Lathe centre	SAV 439.69

LATHE CENTRE SAV 439.70

Spring-loaded, tailstock side, for cylindrical grinding machines SAV 434.80/SAV 434.82/SAV 434.84



ORDERING EXAMPLE

Designation	SAV no.
Lathe centre	SAV 439.70

SAV 439.71 / 439.73

**ACCESSORIES FOR CYLINDRICAL GRINDING UNITS/
INDEX TABLES**

Special-purpose accessories

LATHE CENTRE SAV 439.71

60° tip angle, with catch. Spindle side with flange. Flange types Schaublin (Sch), Deckel (D), SK 30 (SK 30) and SK 40 (SK 40) available.



ORDERING EXAMPLE

Designation	SAV no. - flange
Lathe centre	SAV 439.71 - Sch

THREE-JAW QUICK-RELEASE CHUCK SAV 439.73

Diameter $A = 80$ mm or $A = 110$ mm.
Flange types Schaublin (Sch), Deckel (D), SK 30 (SK 30), SK 40 (SK 40) and MK 4 (MK) available. Version with 6 jaws available on request.



ORDERING EXAMPLE

Designation	SAV no. - A - flange
Three-jaw quick-release chuck	SAV 439.73 - 110 - SK 30