

SAV 482.70

PERMANENT MAGNETIC BASES

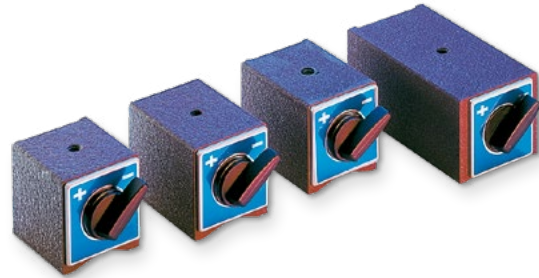
Controllable

APPLICATION

For fixtures, dressers, measuring tripods.

DESIGN

Permanent magnet with ON/OFF switching.
Magnetic contact surfaces on underside and rear side. Additional prism-shaped accommodation on the underside. SAV 482.70 - M 10 x 120 has no prism.



Thread	mm			Rated holding force	kg
	Length	Width	Height		
M 8	58	50	55	20	1.0
M 8	73	50	55	30	1.3
M 10	73	50	55	30	1.3
M 8	120	60	52	50	1.8
M 10	120	60	55	40	2.0

ORDERING EXAMPLE

Designation SAV no. - thread - length
Permanent magnetic base SAV 482.70 - M 10 - 120

SAV 532.11

HAND DESTACKER WITH BELT

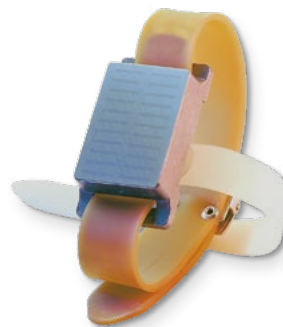
For separating sheets

APPLICATION

For destacking and lifting sheet metal up to 2 mm thickness. For wearing on the right or left palm. Can also be used on the outside of the hand for holding screws/bolts or similar small parts.

DESIGN

The permanent magnet system, which is housed in a sturdy cast housing, guarantees high holding forces. Replacement strap available on request.



Length	mm		Rated holding force*	kg
	Width	Height		
64	37	14	20	0.1

* measuring for vertical pull-off

ORDERING EXAMPLE

Designation SAV no.
Hand destacker with belt SAV 532.11