

Permanent Magnetic Beam

SAV 243.15

With 2 magnetic faces

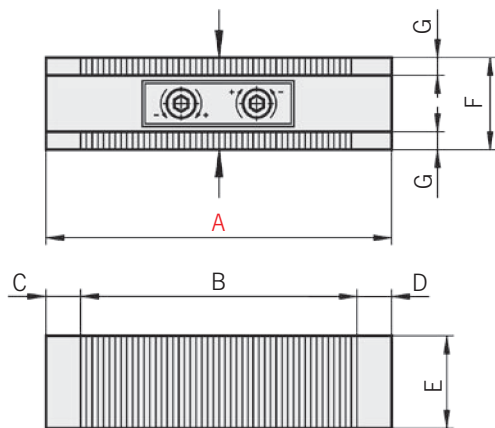
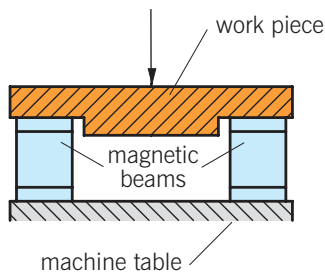
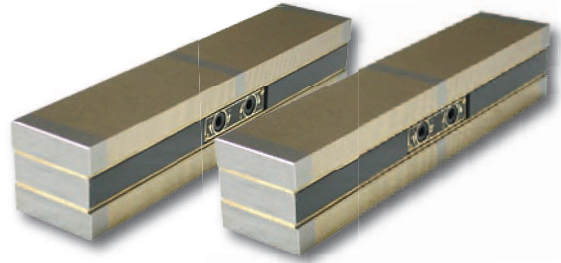
Use:

As a clamping device for holding workpieces securely on spark erosion (EDM) machines and other machining applications, or as part of a fixture.

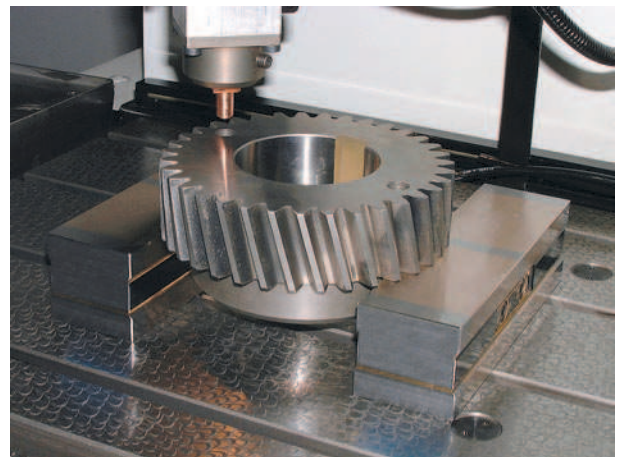
Features:

Two clamping surfaces on opposite faces, individually switchable. Low magnetic field due to fine pole pitch. Supplied in pairs.

Planar parallelism:	0.02 mm
Pole pitch:	1.3 mm
Magnetic field height:	6 mm
Pole plate wearing limit:	6 mm



2 magnetic clamping surfaces



Dimensions in mm								Nom. holding force in N	Weight in kg
A	B	C	D	E	F	G	H		
125	98	13.5	13.5	52	50	15	7	300	2.5
180	153	13.5	13.5	52	50	15	11	400	3.6
250	225	12.5	12.5	52	50	15	11	590	5.0

Ordering example: Permanent Magnetic Beam SAV 243.15 - 125
 Ordering key: Name SAV - No. - A