

SAV 241.31

ELECTRO HOLDING MAGNETS

In two connection types

APPLICATION

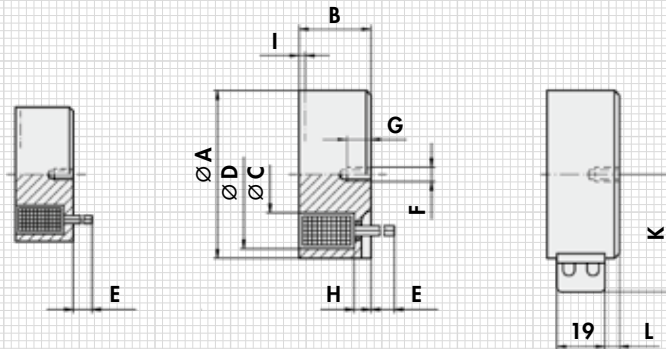
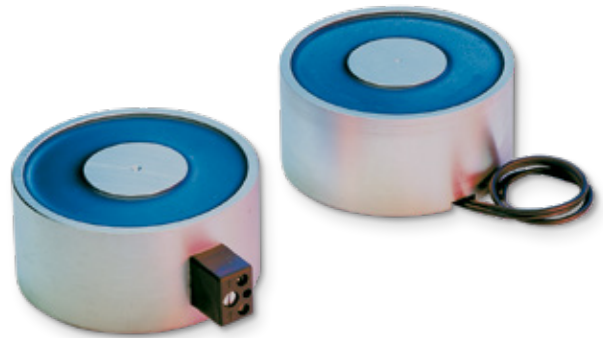
Electro holding magnets provide workholding of ferromagnetic workpieces. Their use can offer substantial benefits in toolmaking, in production and in the turnaround of small and large bulk parts. To achieve the rated holding force, the steel surfaces of the contact side must be fully covered by the workpiece.

TECHNICAL DATA

The max. holding forces FH are provided for steel 1.0037 and refer to the optimum workpiece density with an air gap $\delta L = 0$ mm and 100 % coverage of the contact surface at 90 % of the rated voltage and at operating temperature (approx. 70 K overtemperature without additional heat dissipation).

If different conditions apply to the application, the holding force will be lower.

- Rated voltage: 24 V DC
- Duty cycle: 100 % duty cycle
- Insulation material class: E



SAV 241.31
- A 01 with free wire ends
and straight cable outlet

SAV 241.31
Type A with free wire
ends

SAV 241.31
Type B with terminal
ends

Type and size	mm											N	Optimum coverage thickness	W	kg
	A±0.1	B	C	D	E	F	G	H	I	K	L				
A 01	18	11.0	8.0	16.1	200	M 3	5	2.5	1	-	-	45	>2.0	1.4	0.02
A/B 02	25	20.0	11.1	22.3	200	M 4	6	3.5	1	28.5	0.5	140	>3.0	3.2	0.06
A/B 03	32	22.0	14.3	28.6	200	M 4	6	5.0	3	32.5	0.5	230	>3.6	3.6	0.11
A/B 04	40	25.5	17.9	35.8	200	M 5	8	5.0	3	37.0	0.5	475	>4.5	5.2	0.20
A/B 05	50	27.0	20.4	44.7	200	M 5	8	5.5	3	42.0	4.5	750	>6.0	6.5	0.30
A/B 06	63	30.0	28.2	56.3	200	M 8	12	6.0	3	49.0	6.5	1000	>7.0	9.0	0.55
A/B 08	80	38.0	34.0	72.8	200	M 8	12	8.5	3	57.5	7.5	1800	>9.0	15.0	1.20
A 10	100	43.0	42.8	91.3	300	M 10	15	10.0	3	-	-	3400	>10.5	20.5	2.10
A 15	150	56.0	67.9	134.0	300	M 16	24	16.5	3	-	-	9300	>17.0	37.0	6.40
A 18	180	63.0	84.8	161.0	300	M 24	36	20.5	3	-	-	15000	>21.0	50.0	10.50
A 25	250	80.0	117.5	223.0	300	M 24	36	28.5	3	-	-	30000	>29.0	90.0	25.90

ORDERING EXAMPLE

Designation SAV no. - type and size
Electro holding magnet SAV 241.31 - A 01