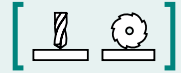


**SAV 242.91**

**PERMANENT MAGNETIC CHUCK TOWERS**

Chuck towers, precision-milled



**APPLICATION**

For horizontal milling and drilling processes.

**DESIGN**

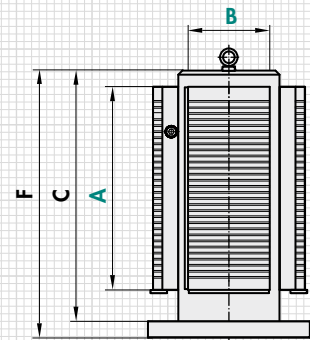
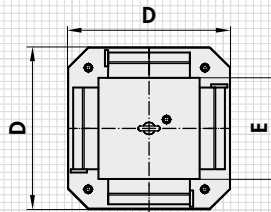
Chuck tower made of St 52-3, precision-milled. With 4 permanent magnetic chucks SAV 243.11, amplified high-energy system, 15 mm pole pitch, fastening holes as required.

**TECHNICAL DATA**

- Perpendicularity: 0.03/1000 mm
- Parallelism: 0.04/1000 mm
- Rated holding force: 150 N/cm<sup>2</sup>
- Magnetic field height: 12 mm
- Wear layer of the pole plate: 5 mm



mm						kg
A	B	C	D	E	F	Weight
300	150	415	320	200	455	183.0
500	200	620	400	256	660	395.0
600	300	660	500	356	700	616.0



**ORDERING EXAMPLE**

<b>Designation</b>	<b>SAV no. - A x B</b>
Permanent magnetic chuck tower	SAV 242.91 - 600 x 300