

**SAV 245.03**

**PRECISION SINE TABLES**

Swivelling around the transverse axis



**DESIGN**

With sine table base unit made of steel. Hardened, burnished and precision-ground. Maximum precision with flat design. Standard design with permanent magnetic chuck.

Delivered in a wooden storage box.

With sine table with degrees/minutes in mm, precision length stop and transverse stop bar.

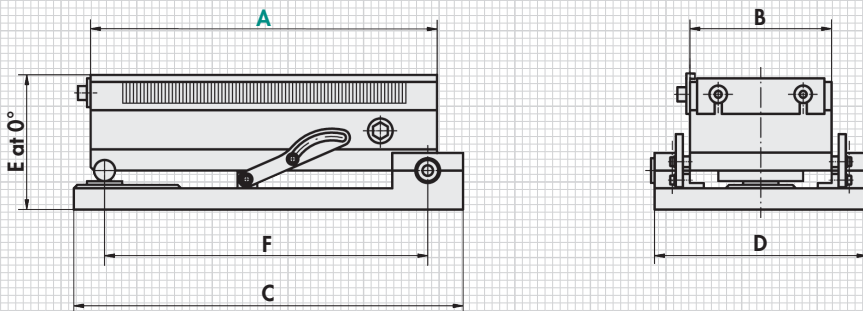
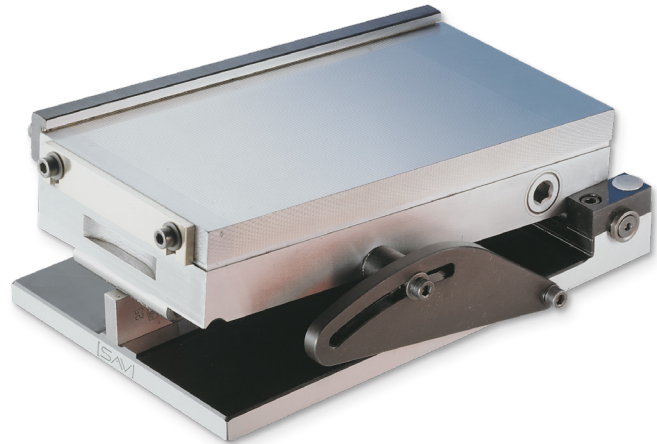
**APPLICATION**

The angles are determined using the gauge blocks using the sinusoidal principle.

Clamping is achieved with the upper bearing shell halves.

**TECHNICAL DATA**

- Angle accuracy:  $\pm 5$  arc sec
- Plane parallelism:  $\pm 0.005/100$  mm
- Gauge block at  $0^\circ$ : 3 mm
- Swivelling range:  $0^\circ$  to  $30^\circ$
- Rated holding force:  $90 \text{ N/cm}^2$
- Pole pitch: 1.9 mm
- Magnetic field height: 6 mm
- Wear layer of the pole plate:  $< 8$  mm



mm						kg
A	B	C	D	$E_2^0$	F	Weight
140	70	160	110	81	125	8.5
175	100	190	140	81	160	10.0
255	130	270	170	81	240	22.0
300	150	315	190	86	285	28.0
400	200	415	240	86	385	55.5
450	150	465	190	86	435	48.0

Other designs and dimensions on request. Also available with electro permanent magnet or other magnet systems. All standard sized of the permanent magnetic chucks SAV 243.01 (chapter 1.2.1) are available as a sine table.

Design with flushing holes available (surcharge applies).

**ORDERING EXAMPLE**

Designation	SAV no. - A
Precision sine table	SAV 245.03 - 450