

SAV 240.16

HOLDING MAGNETS

With smooth stud (bar magnet)

DESIGN

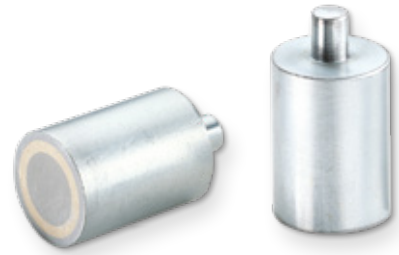
Bar magnet with smooth stud.
Shielded system.
Max. service temperature: 80 °C.

FASTENING OPTION

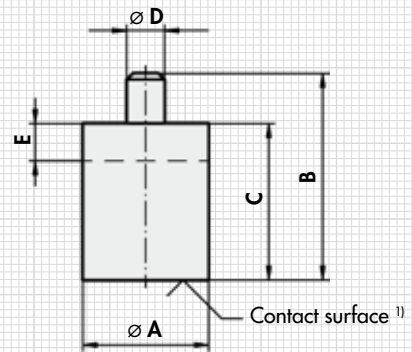
Riveting in the stud or screwing in after machining a thread.

MAGNET MATERIAL

NdFeB



Type	mm					Rated holding force N	Weight kg
	A ±0.2	B ±0.2	C	D	E ²⁾		
MH 16 - 01	6	28	20	3	2	6	0.004
MH 16 - 02	8	28	20	3	3	12	0.007
MH 16 - 03	10	28	20	4	6	24	0.013
MH 16 - 04	13	28	20	4	7	60	0.021
MH 16 - 05	16	28	20	5	5	90	0.032
MH 16 - 06	20	33	25	6	6	135	0.062
MH 16 - 07	25	45	35	8	5	190	0.137
MH 16 - 08	32	50	40	10	3	340	0.245



ORDERING EXAMPLE

Designation	SAV no. - type
Holding magnet	SAV 240.16 - MH 16 - 08

NOTE

- ¹⁾ In case of changes to the contact surface, no more than 2 mm may be removed, as otherwise the holding force decreases greatly.
- ²⁾ The stud can be extended by dimension E without reducing the holding force.