

**SAV 240.38**

**HOLDING MAGNETS**

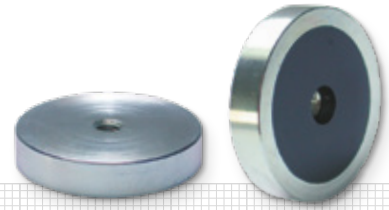
High-energy magnets, hole and counterbore

**DESIGN**

Shielded system, galvanised surface.  
Anisotropic magnetising.  
Max. service temperature: 80 °C.

**MAGNET MATERIAL**

NdFeB

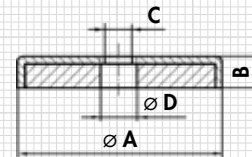
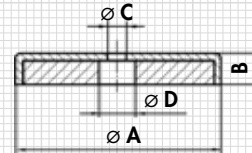


**With hole and counterbore:**

Type	mm				Rated holding force	Weight
	A ±0.2	B ±0.2	C	D		
MH 38 - 216	16	4.5	3.5	6.6	75	0.006
MH 38 - 220	20	6	4.5	9	105	0.013
MH 38 - 225	25	7	4.5	9	160	0.024
MH 38 - 232	32	7	5.5	11	310	0.039
MH 38 - 240	40	8	5.5	10.6	500	0.073

**With internal thread:**

Type	mm				Rated holding force	Weight
	A ±0.2	B ±0.2	C	D		
MH 38 - 332	32	7	M 5	5.5	330	0.04
MH 38 - 340	40	8	M 5	10.5	500	0.074
MH 38 - 350	50	10	M 8	9.5	800	0.140
MH 38 - 363	63	14	M 10	11.7	1100	0.315
MH 38 - 375	75	15	M 10	13	1750	0.479



**ORDERING EXAMPLE**

Designation SAV no. - type  
Holding magnet SAV 240.38 - MH 38 - 332