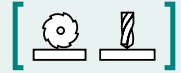


SAV 248.70

POLE RAISERS – RECTANGULAR

For adaptation to the workpiece geometry

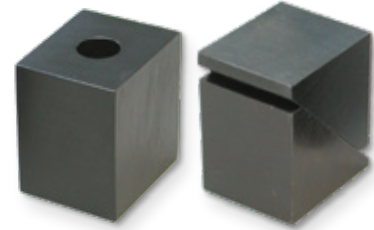


APPLICATION

As add-on elements for magnets. Can only be used in conjunction with magnetic chuck SAV 243.77-55 and SAV 243.77-85 or SAV 243.76-65, SAV 243.76-85 and SAV 243.80.

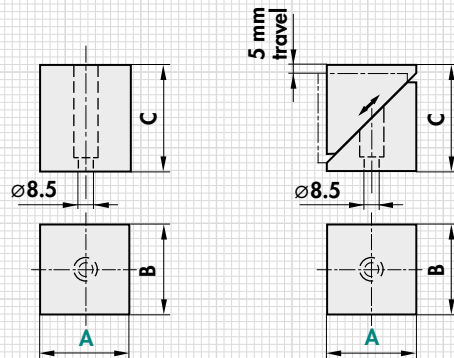
DESIGN

Bright steel, pole raiser can be machined in the desired shape. The table shows an excerpt of the pole shoes manufactured by us as a standard. Can be provided with machining for specific processes and workpieces. Custom versions available.



Type	mm			Design	kg
	A	B	C		
PVS 3	48	40	53.5	Rigid	0.8
PVF 3	48	40	56	spring-loaded	0.8

Type	mm			Design	kg
	A	B	C		
PVS 4	70	70	86.5	Rigid	3.3
PVF 4	70	70	89	spring-loaded	3.5



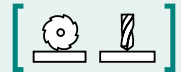
ORDERING EXAMPLE

Designation	SAV no. - A - type
Pole raiser	SAV 248.70 - 70 - PVS 3

SAV 248.70

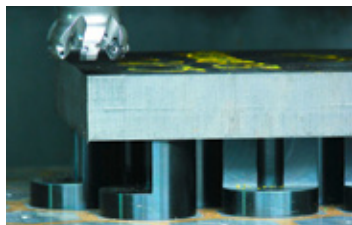
POLE RAISERS – ROUND

For adaptation to the workpiece geometry



APPLICATION

As add-on elements for magnets. Can only be used in conjunction with magnetic chuck SAV 243.78 and SAV 243.79.

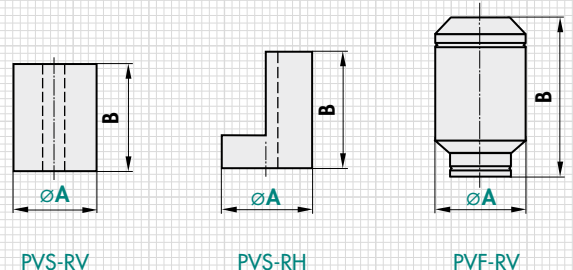


DESIGN

Bright steel, pole raiser can be machined in the desired shape. The table shows an excerpt of the pole shoes manufactured by us as a standard. Can be provided with machining for specific processes and workpieces. Custom versions available.



Type	mm		Design	kg
	A	B		
PVS-RV	55	75	rigid, full	1.8
PVS-RH	55	75	rigid, half	1.4
PVF-RV	60	70 - 80	spring-loaded, full	1.5



ORDERING EXAMPLE

Designation	SAV no. - A - type
Pole raiser	SAV 248.70 - 60 - PVF-RV