

SAV 244.03

PERMANENT MAGNETIC CIRCULAR CHUCKS

With parallel pole pitch $P = 7$ mm



APPLICATION

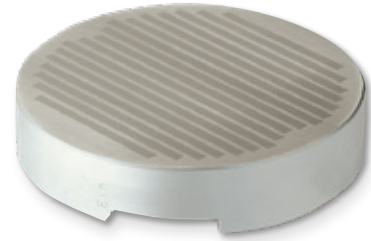
For small and medium workpieces.

DESIGN

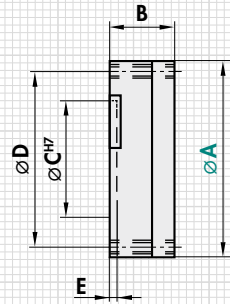
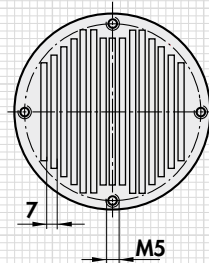
The special magnet system allows chucking of parts as thin as 1 mm with maximum holding force. ON/OFF control with removable key (radial adjustment). The machine spindle should be lockable for ON/OFF. Available with flange on request (see SAV 248.90 to 248.94).

TECHNICAL DATA

- Rated holding force: 100 N/cm²
- Magnetic field height: 6 mm
- Wear layer of the pole plate: 3 mm



mm					rpm	kg
A	B ^{+0.5 -2}	C	D	E	Max. speed	Weight
100	32	80	87.5	3	350	1.1
150	32	130	137.5	3	230	2.6



ORDERING EXAMPLE

Designation	SAV no. - A
Permanent magnetic circular chuck	SAV 244.03 - 150