

SAV 242.07

PERMANENT MAGNETIC CLAMPING BLOCKS

Switchable



APPLICATION

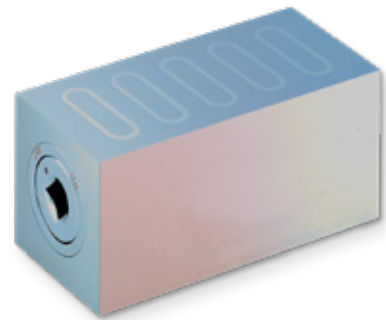
In conjunction with magnetic chucks for grinding workpieces with protruding sections, narrow sides, gauges, etc.

DESIGN

Switchable permanent magnet with chucking area at the top.
Side surfaces ground at an angle to one another.

TECHNICAL DATA

- Rated holding force:
A = 115: 2.5 N/cm²
A = 135: 6.0 N/cm²



mm							kg
A	B	C	D	E	F	G	Weight
115	40	40	75	30	M 5	7	1.3
135	50	60	80	40	M 6	10	2.9

ORDERING EXAMPLE

Designation	SAV no. - A x B
Permanent magnetic clamping block	SAV 242.07 - 135 x 50